



How to Install a Barn Door

SUPPLIES:

1/2

- Barn door
- Barn door hardware kit
- Lumber
- Paint or stain
- Stud finder
- Tape measure
- Pencil
- Level
- Speed square
- Phillips head screwdriver
- Power drill / driver
- Drill bits

Before getting started, make sure you have

SUPPLIES:

2/2

- Clamps
- Adjustable wrench
- Ratchet with sockets

- Wood screws
- Step ladder
- Countersink bit

all the necessary tools and materials ready.

PRO-TIP

For double barn doors, you'll need empty wall space on both sides of the opening.



Make sure there's enough wall space for the door to slide

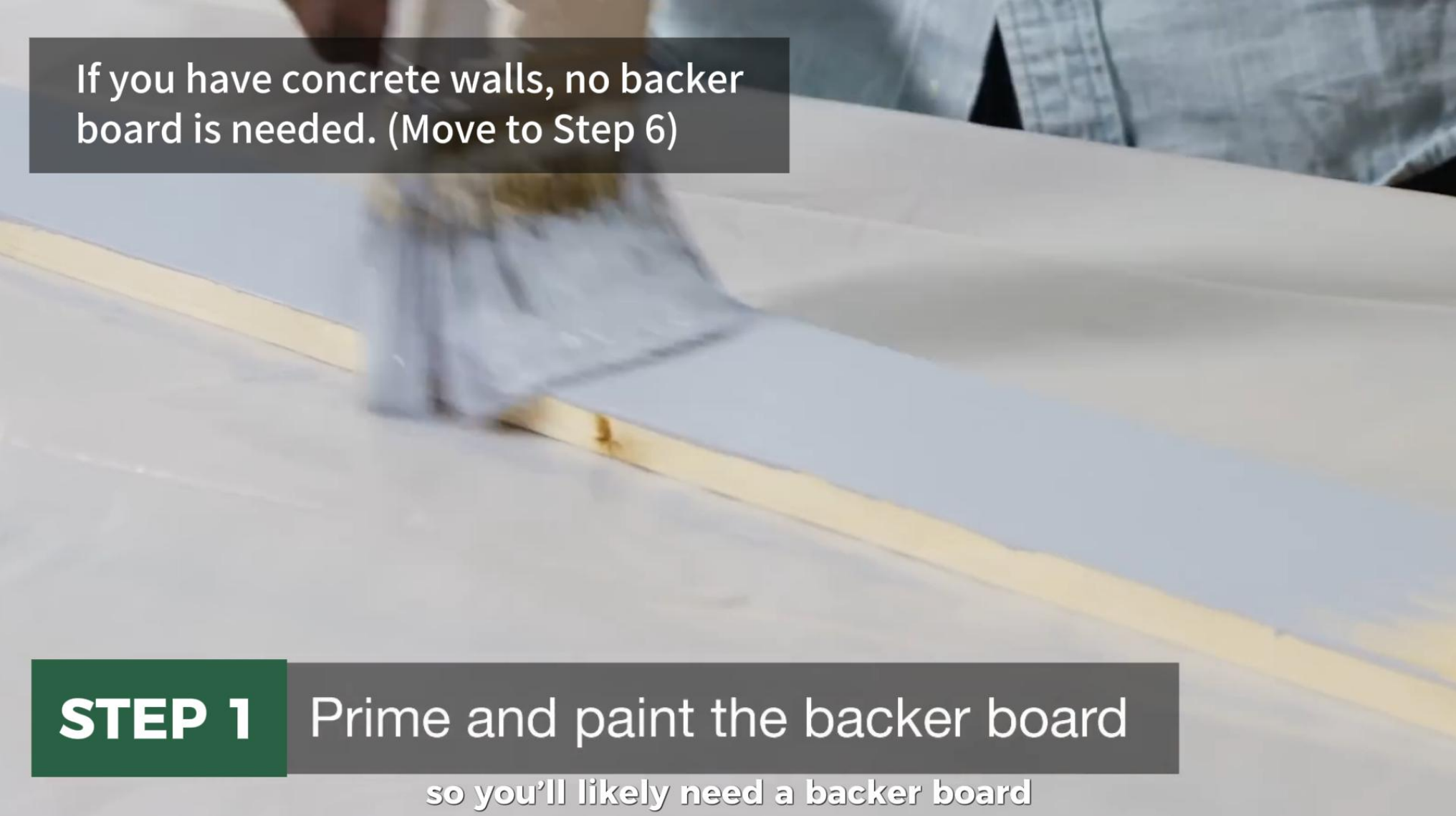


Your barn door should fully cover the doorway with 1-2 inches of overhang

A person wearing blue jeans is working on a wall. A large, semi-transparent grey rectangular box is overlaid on the center of the image, containing white text. The background shows a wall with a wooden track and a wooden board being installed.

INSTALLING THE BACKER BOARD AND TRACK

Barn doors need about an inch of space from the wall



If you have concrete walls, no backer board is needed. (Move to Step 6)

STEP 1

Prime and paint the backer board

so you'll likely need a backer board



STEP 2

Locate the studs

Use a stud finder to mark studs



STEP 3 Mark the stud locations

Mark stud positions on the backer board, keeping them centered and level.

TIP

Protect your surface with a piece of scrap wood.

STEP 4 Pre-drill holes

Drill two holes at each stud with a countersink bit.





TIP

Protect your surface with a piece of scrap wood.

STEP 4 Pre-drill holes

Then transfer the track holes to the board



TIP

Protect your surface with a piece of scrap wood.

STEP 4

and pre-drill according to the manufacturer's instructions.



STEP 5

Attach the backer board to the wall

With help, attach the backer board to the wall.



STEP 5

Attach the backer board to the wall

Secure one end first with screws slightly recessed

A close-up shot of a hand holding a brush with white paint, applying it to a light blue wall. The brush is positioned horizontally, and the hand is moving it from left to right. The wall has a subtle texture and a few small imperfections. The lighting is bright and even.

STEP 5

Fill any screw holes and touch up with paint as needed.



STEP 6

Attach the metal track

Align the track with the board holes.



STEP 6

Keep the track level and tighten the bolts.

A close-up photograph of a wooden door with a black metal frame and a black X-brace. The door is made of vertical wooden planks. The metal frame and brace are secured with numerous silver-colored screws. The background is a plain, light-colored wall.

STEP 6

Attach the metal track: concrete walls

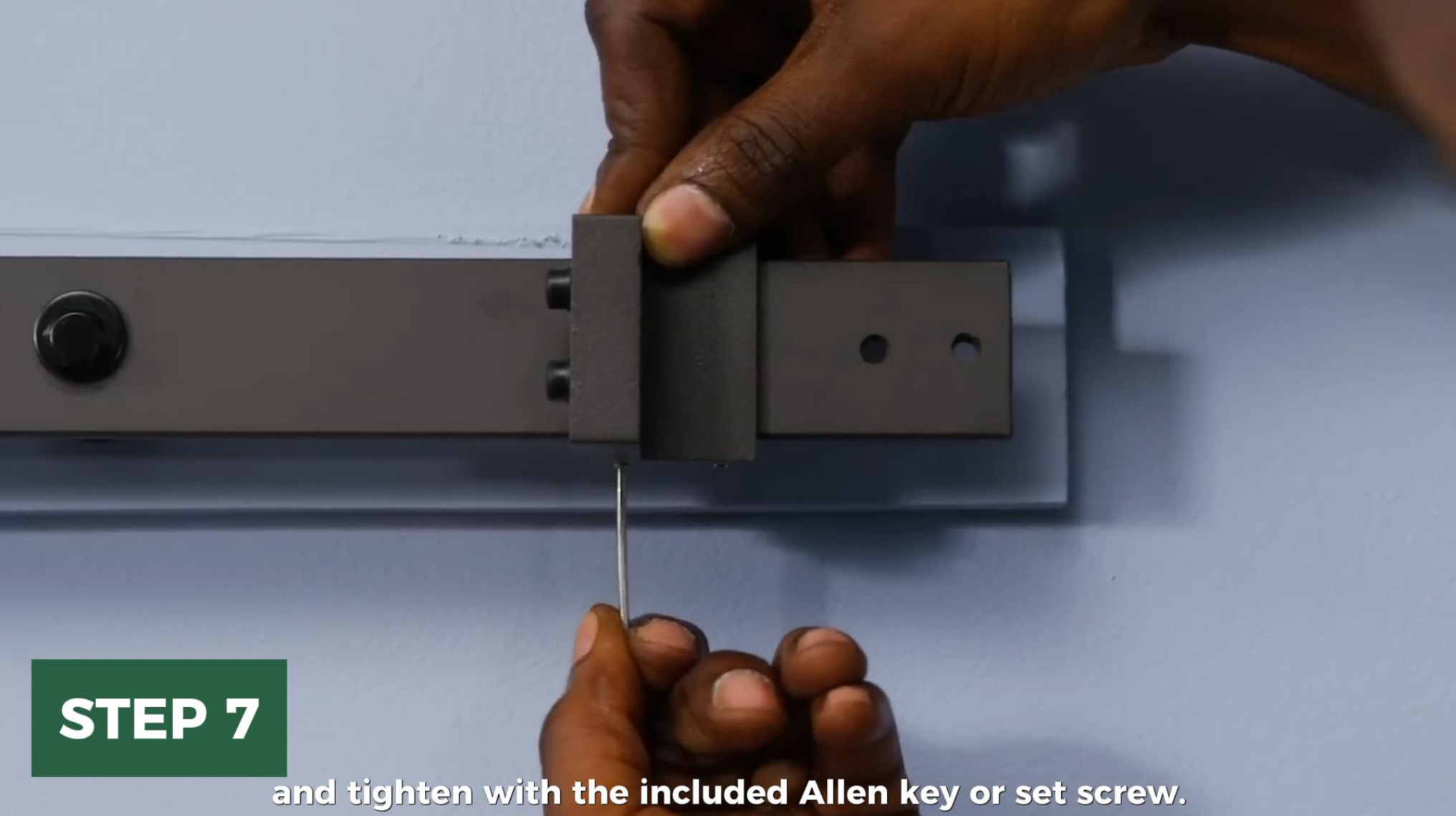
For concrete walls, mark the mounting holes



STEP 7

Install stoppers

Install stoppers on each end of the track



STEP 7

and tighten with the included Allen key or set screw.



PREPARING THE DOOR

Your kit includes rollers and templates.



STEP 8 Attach the rollers

Follow the instructions to attach them to the door.

A close-up photograph showing a person's hands using an orange speed square to check the straightness of a wooden strap. The strap is positioned against a dark metal track on a light-colored wooden workbench. The person is wearing a light blue shirt and blue jeans. The speed square is held against the strap, and the person's fingers are visible as they adjust it. The workbench has a dark metal track with three black knobs. The background is a plain, light-colored wall.

STEP 8

Use a speed square to make sure the straps are straight.

TIP

Some kits have handles included.

STEP 9

Attach the handles

Install handles about 36 inches from the bottom



ensuring the inside handle clears the jamb.



SAFETY TIP

Have a partner help
you hang heavier doors.

STEP 10

Lift and place the door

Test to make sure it opens and closes smoothly.

A close-up photograph of a door track assembly. A yellow tape measure is stretched across the track, showing measurements from 1 to 7 inches. An orange tape measure is also visible on the right side. The track is made of dark metal and is mounted on a wooden door frame. The background is a plain, light-colored wall.

TIP

Anti-jump disks keep the door in place if the wheels come off the track.

STEP 11

Install door guides and anti-jump disks

Install anti-jump discs and door guides per the manufacturer's

A close-up photograph showing a person's hands using a blue-handled screwdriver to adjust a metal door track. The track is mounted on a wall, and a black roller wheel is visible. The person is wearing a light blue button-down shirt. The background is a plain, light-colored wall.

TIP

Anti-jump disks keep the door in place if the wheels come off the track.

STEP 11

Install door guides and anti-jump disks

Install anti-jump discs and door guides per the manufacturer's



STEP 12 Make final checks

Finally, perform a few checks.



STEP 12

Make sure the door slides properly and the stoppers are secure.

A person is seen from behind, wearing a light blue long-sleeved shirt, cleaning a large wooden barn door with a bright yellow cloth. The door is made of vertical wooden planks and is mounted on a metal track system. The background is a plain, light-colored wall.

BARN DOOR MAINTENANCE

For maintenance

TIP

Don't use coarse rags, steel wool or harsh products.

wipe the hardware and track with a soft cloth and gentle cleanser.



fully functional barn doors in your home in no time.